

SITE DATA TABLE	
PROJECT DATA	
OWNER:	ORANGE COUNTY GOVERNMENT 201 S. ROSALIND AVENUE ORLANDO, FLORIDA 32802 PHONE: (407) 836-0032 CONTACT: WILLIAM M. HICKS
AGENT:	REYNOLDS, SMITH & HILLS, INC. 10748 DEERWOOD PARK BOULEVARD SOUTH JACKSONVILLE, FLORIDA 32256 PHONE: (407) 256-2500 CONTACT: MICHAEL A. COFFEY, PhD, P.E.
PROJECT NAME:	ORANGE COUNTY UTILITIES OPERATIONS CENTER 8100 PRESIDENT'S DRIVE ORLANDO, FL.
PARCEL NUMBER:	33-23-29-7268-00-102
USE:	OFFICE/WAREHOUSE
NUMBER OF STORIES:	2 STORY
HEIGHT:	VARIABLE (MAX. HT. 25')
EXISTING BUILDING SQUARE FOOTAGE:	79,696
PROPOSED BUILDING SQUARE FOOTAGE:	10,499
TYPE OF CONSTRUCTION:	IIB
NUMBER OF EMPLOYEES:	177

PRE-DEVELOPMENT LOT DATA:		
ITEM	S.F. (AC.)	PERCENT (%)
TOTAL LOT AREA	639,896 (14.69)	100
BUILDING AREA (FOOTPRINT)	63,162 (1.45)	10
TOTAL PERVIOUS AREA	256,133 (5.88)	40
TOTAL IMPERVIOUS AREA **	360,241 (8.27)	56
TOTAL POND AREA	23,522 (0.54)	4
POST-DEVELOPMENT LOT DATA:		
ITEM	S.F. (AC.)	PERCENT (%)
TOTAL LOT AREA	639,896 (14.69)	100
BUILDING AREA (FOOTPRINT)	77,536 (1.78)	12
TOTAL PERVIOUS AREA	145,491 (3.34)	23
TOTAL IMPERVIOUS AREA **	446,925 (10.26)	70
TOTAL POND AREA	47,480 (1.09)	7

** INCLUDES BUILDING AREA

ZONING: I-2 / I-3		
SETBACKS	BUILDING	BUILDING HEIGHT
FRONT	25'	50' MAX
REAR	15'	
SIDE	10'	
UTILITIES:		
USE	PROVIDER	
ELECTRIC	PROGRESS ENERGY	
WATER	OCUD	
GAS	TECO	
TELEPHONE	AT&T	

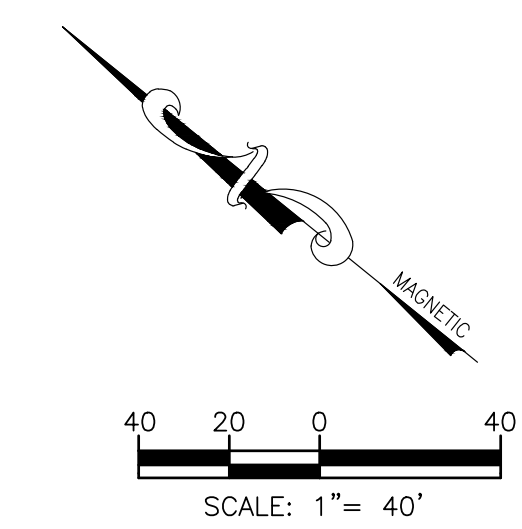
PAVEMENT LEGEND:

- INDICATES AREAS TO RECEIVE COMPACTED SUBGRADE AND REINFORCED CONCRETE PAVEMENT. (SEE TYPICAL 6" CONCRETE PAVEMENT SECTION, SHEET C-105)
- INDICATES AREAS TO RECEIVE COMPACTED SUBGRADE, NEW BASE AND HEAVY DUTY ASPHALT PAVEMENT. (SEE TYPICAL HEAVY DUTY ASPHALT PAVEMENT SECTION, SHEET C-105)
- INDICATES PAVEMENT AREAS TO BE MILLED AND OVERLAYED WITH TYPICAL ASPHALT. (SEE TYPICAL ASPHALT OVERLAY SECTION, SHEET C-105)

AREA SHOWN IS THE PAVEMENT INCLUDED IN THIS PROJECT. CONSIST OF APPROXIMATELY 41,400 SF OF CONCRETE PAVEMENT. CONCRETE ASSOCIATED WITH NEW FUEL FACILITY AND TRUCK WASH IS ALSO INCLUDED IN THIS PROJECT SCOPE OF WORK. ALL OTHER PAVEMENT SHOWING IS WITHIN A SEPERATE CONTRACT AND SHALL NOT BE INCLUDED IN THIS SCOPE OF WORK.

CONTRACTOR IS RESPONSIBLE FOR PAVEMENT REPLACEMENT AND REPAIR FOR FOUNDATION INSTALLATION AND ANY DAMAGE ASSOCIATED WITH THE CONSTRUCTION OF THE PEMB

- GENERAL NOTES:**
- REFER TO SHEET GN-001 FOR GENERAL NOTES & LEGEND.
 - ALL RADII SHALL BE 5' UNLESS OTHERWISE NOTED ON THESE DRAWINGS.
 - CONTRACTOR SHALL HAVE EROSION CONTROL DEVICES IN PLACE PRIOR COMMENCEMENT OF CONSTRUCTION. IT IS THE CONTRACTOR'S RESPONSIBILITY TO ASURE ALL EROSION CONTROL DEVICES ARE MAINTAINED IN PROPER OPERATING CONDITION THROUGHOUT THE CONSTRUCTION PERIOD.
 - CONTRACTOR SHALL BE RESPONSIBLE TO ENSURE THAT HANDICAP PARKING SPACES DO NOT EXCEED 2% SLOPE IN ANY DIRECTION AND SHALL BE IN COMPLIANCE WITH THE FLORIDA BUILDING CODE, LATEST EDITION FOR ADA REQUIREMENTS. CURB RAMPS SHALL NOT EXCEED 1:12 SLOPE IN THE DIRECTION OF TRAVEL WITH A MAXIMUM 2% CROSS SLOPE.
 - ALL PAVEMENT MARKINGS AND STRIPING SHALL BE REFLECTIVE WHITE OR YELLOW AND CONFORM TO F.D.O.T. STANDARD 17346.



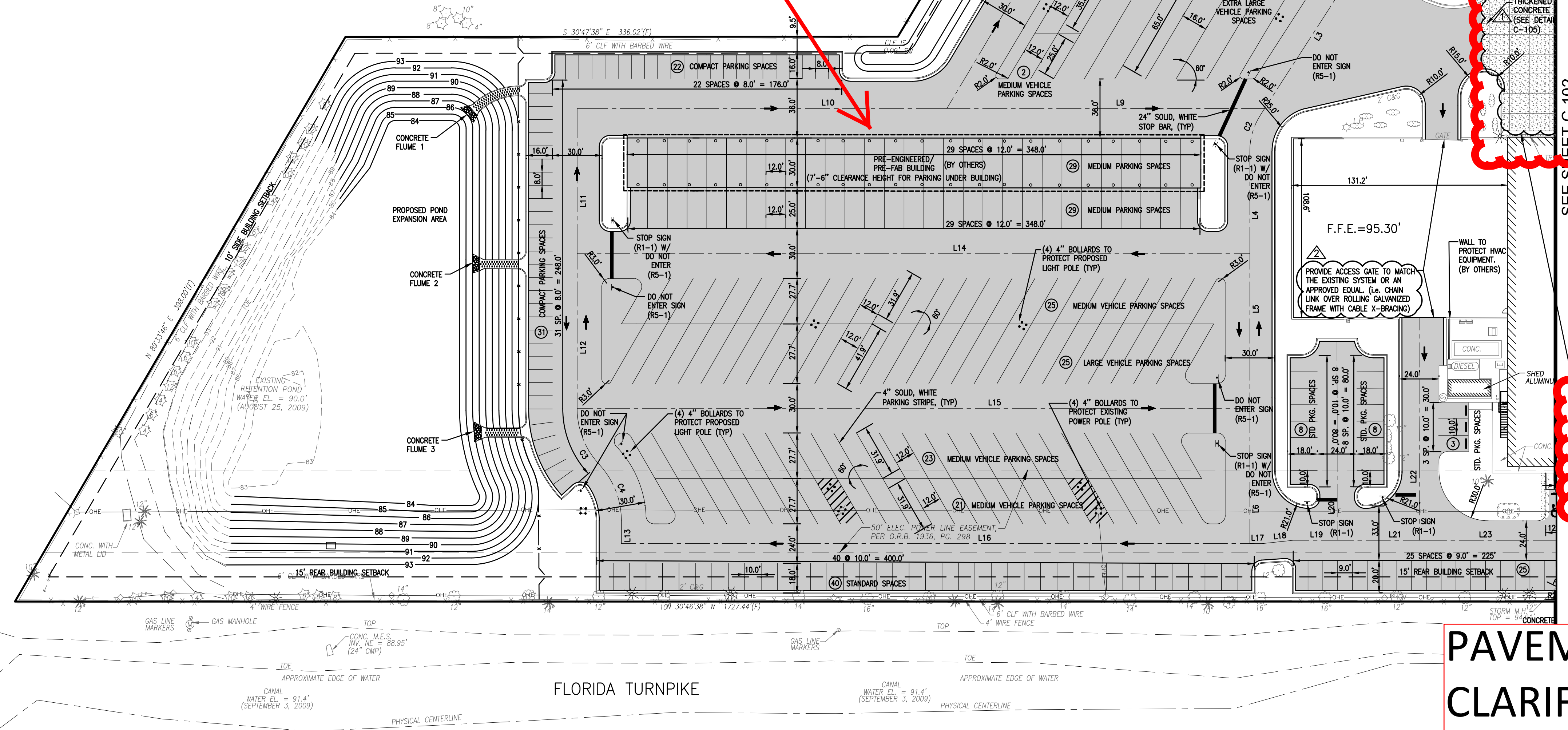
LINE TABLE		
LINE #	LENGTH	DIRECTION
L1	38.92	N89° 54' 10.17"W
L2	76.62	N89° 33' 14.23"W
L3	119.97	N87° 54' 32.81"W
L4	62.52	S59° 13' 24.93"W
L5	94.03	S59° 13' 24.93"W
L6	82.30	S59° 13' 24.93"W
L7	198.13	S30° 46' 35.07"E
L8	112.92	S89° 58' 22.96"E
L9	193.27	S30° 46' 35.07"E
L10	224.94	S30° 46' 35.07"E
L11	88.32	S59° 13' 24.93"W
L12	94.03	S59° 13' 24.93"W
L13	14.04	S59° 13' 24.93"W
L14	409.18	S30° 46' 35.07"E
L15	409.18	S30° 46' 35.07"E
L16	382.25	S30° 46' 35.07"E
L17	7.75	S30° 46' 35.07"E
L18	18.78	S36° 53' 50.49"E
L19	26.74	S30° 46' 35.07"E
L20	121.01	N59° 11' 47.45"E
L21	49.96	S30° 46' 35.07"E
L22	135.62	N59° 10' 10.95"E
L23	355.85	S30° 46' 35.07"E

CURVE TABLE			
CURVE #	LENGTH	RADIUS	DELTA
C1	69.04	1586.98	2.49
C2	23.35	40.00	33.44
C3	37.57	50.00	43.05
C4	37.57	50.00	43.05

ADD SCOPE FOR DEMOLITION OF APPROXIMATELY 41,400 SF OF EXISTING ASPHALT PAVEMENT AND CONSTRUCTION OF APPROXIMATELY 41,400 SF OF NEW CONCRETE PAVEMENT AT LOCATION IMMEDIATELY EAST OF THE EXISTING BUILDING. SEE SHEET C-105 FOR PAVEMENT DETAILS.

NOTE: ALL OTHER CIVIL WORK BID SEPARATELY; SEE PERMIT B13900566.

PAVEMENT SCOPE CLARIFICATION EXHIBIT



Reynolds, Smith and Hills, Inc.
1000 LEGION PLACE, SUITE 800
ORLANDO, FL 32801
407-893-5800 FAX 407-648-2128
www.rsandh.com
FL.Cert.Nos. AAC001886 - EB0005620 - LCC000210

ORANGE COUNTY UTILITIES OPERATIONS CENTER
8100 PRESIDENTS DRIVE
ORLANDO, FLORIDA

SEAL

MICHAEL A. COFFEY, P.E.
FL. REGISTRATION NO. 57412

REVISIONS		
NO.	DESCRIPTION	DATE
1	PEMB ADDENDUM 1	6/06/13
2	PEMB ADDENDUM 3	7/02/13
3	CONFORMED SET	3/14/14

DATE ISSUED: APRIL 12, 2013
REVIEWED BY: M. COFFEY, P.E.
DRAWN BY: D. STALEY
DESIGNED BY: M. COFFEY, P.E.

AEP PROJECT NUMBER 107-0745-000

© 2003 REYNOLDS, SMITH AND HILLS INC.

SHEET TITLE

SITE GEOMETRY & LAYOUT PLAN

SHEET NUMBER

C-103

CONFORMED SET



Reynolds, Smith and Hills, Inc.
 1000 LEGION PLACE, SUITE 800
 ORLANDO, FL 32801
 407-893-5800 FAX 407-648-2128
 www.rsandh.com
 FL.Cert.Nos. AAC001886 - EB0005620 - LCC000210



ORANGE COUNTY UTILITIES OPERATIONS CENTER
 8100 PRESIDENTS DRIVE
 ORLANDO, FLORIDA

SEAL

MICHAEL A. COFFEY, P.E.
 FL. REGISTRATION NO. 57412

REVISIONS

NO.	DESCRIPTION	DATE
1	PEMB ADDENDUM 1	6/06/13
2	CONFORMED SET	3/14/14

DATE ISSUED: APRIL 12, 2013
 REVIEWED BY: M. COFFEY, P.E.
 DRAWN BY: D. STALEY
 DESIGNED BY: M. COFFEY, P.E.

AEP PROJECT NUMBER
 107-0745-000

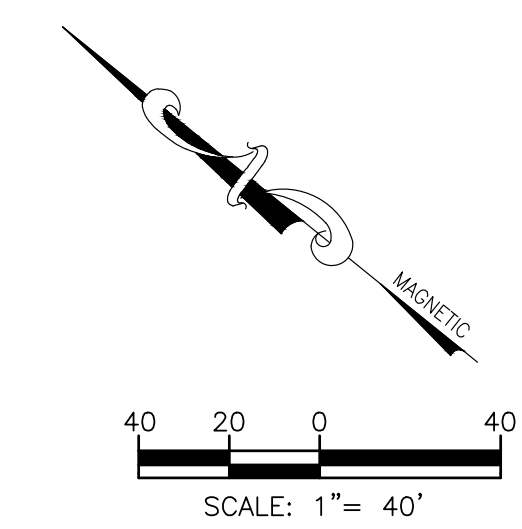
© 2003 REYNOLDS, SMITH AND HILLS INC.

SHEET TITLE

SITE GEOMETRY & LAYOUT PLAN

SHEET NUMBER
C-104

CONFORMED SET



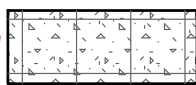

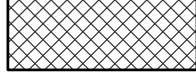
GENERAL NOTES:

1. REFER TO SHEET GN-001 FOR GENERAL NOTES & LEGEND.
2. ALL RADII SHALL BE 5' UNLESS OTHERWISE NOTED ON THESE DRAWINGS.
3. CONTRACTOR SHALL HAVE EROSION CONTROL DEVICES IN PLACE PRIOR COMMENCEMENT OF CONSTRUCTION. IT IS THE CONTRACTOR'S RESPONSIBILITY TO ASSURE ALL EROSION CONTROL DEVICES ARE MAINTAINED IN PROPER OPERATING CONDITION THROUGHOUT THE CONSTRUCTION PERIOD.
4. CONTRACTOR SHALL BE RESPONSIBLE TO ENSURE THAT HANDICAP PARKING SPACES DO NOT EXCEED 2% SLOPE IN ANY DIRECTION AND SHALL BE IN COMPLIANCE WITH THE FLORIDA BUILDING CODE, LATEST EDITION FOR ADA REQUIREMENTS. CURB RAMPS SHALL NOT EXCEED 1:12 SLOPE IN THE DIRECTION OF TRAVEL WITH A MAXIMUM 2% CROSS SLOPE.
5. ALL PAVEMENT MARKINGS AND STRIPING SHALL BE REFLECTIVE WHITE OR YELLOW AND CONFORM TO F.D.O.T. STANDARD 17346.

USE	REQUIRED	PROVIDED
OFFICE	1 SP / 200 SF (39,281 SF) 39,281/200 = 197 SP	197
WAREHOUSE	1 SP / 1,000 SF (50,914 SF) 50,914/1,000 = 51 SP	269
HC	401-500 TOTAL, 9 REQ'D	9
TOTAL	197 + 51 = 248	475*

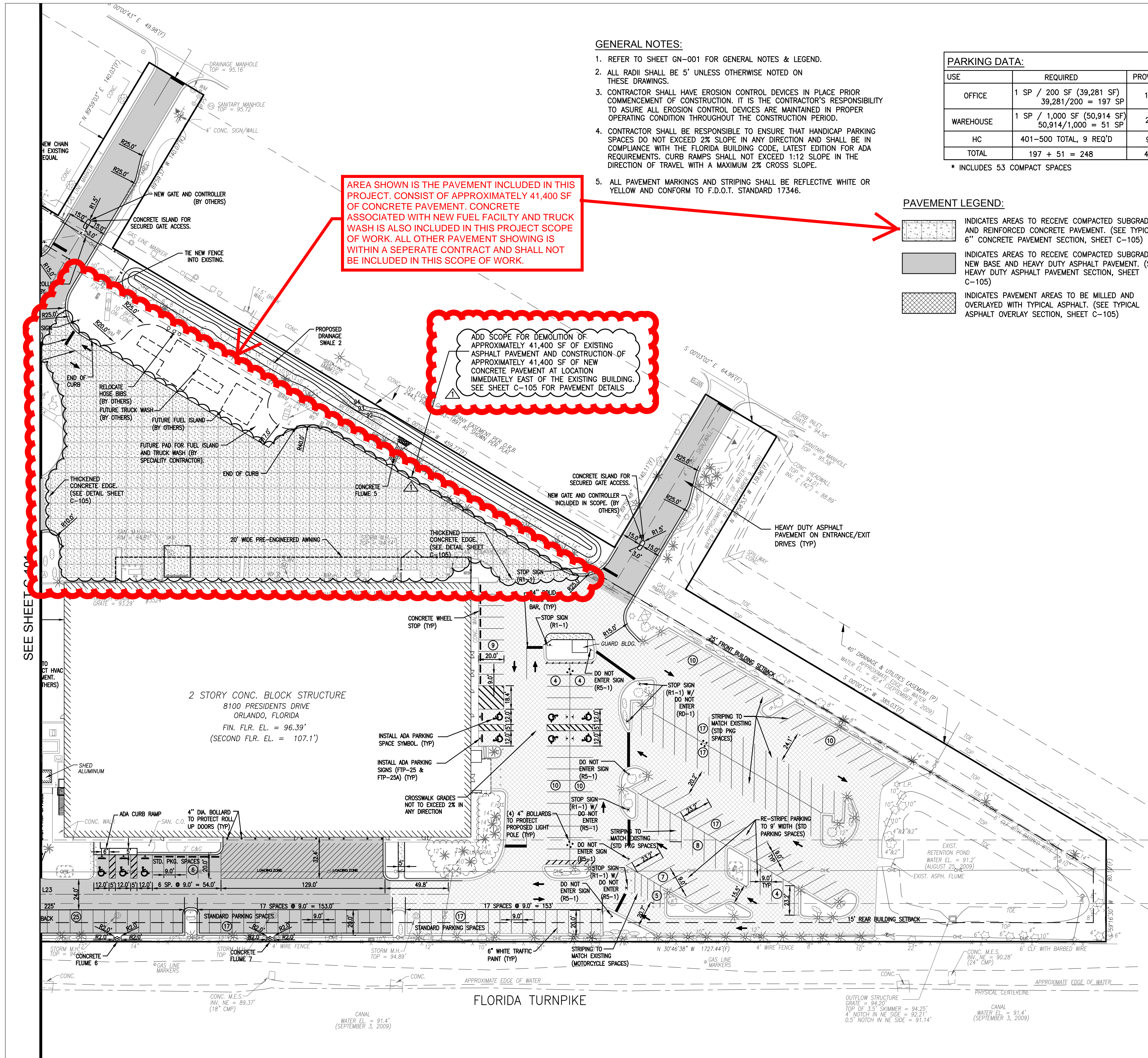
* INCLUDES 53 COMPACT SPACES

PAVEMENT LEGEND:

-  INDICATES AREAS TO RECEIVE COMPACTED SUBGRADE AND REINFORCED CONCRETE PAVEMENT. (SEE TYPICAL 6" CONCRETE PAVEMENT SECTION, SHEET C-105)
-  INDICATES AREAS TO RECEIVE COMPACTED SUBGRADE, NEW BASE AND HEAVY DUTY ASPHALT PAVEMENT. (SEE TYPICAL HEAVY DUTY ASPHALT PAVEMENT SECTION, SHEET C-105)
-  INDICATES PAVEMENT AREAS TO BE MILLED AND OVERLAVED WITH TYPICAL ASPHALT. (SEE TYPICAL ASPHALT OVERLAY SECTION, SHEET C-105)

AREA SHOWN IS THE PAVEMENT INCLUDED IN THIS PROJECT. CONSIST OF APPROXIMATELY 41,400 SF OF CONCRETE PAVEMENT. CONCRETE ASSOCIATED WITH NEW FUEL FACILITY AND TRUCK WASH IS ALSO INCLUDED IN THIS PROJECT SCOPE OF WORK. ALL OTHER PAVEMENT SHOWING IS WITHIN A SEPERATE CONTRACT AND SHALL NOT BE INCLUDED IN THIS SCOPE OF WORK.

ADD SCOPE FOR DEMOLITION OF APPROXIMATELY 41,400 SF OF EXISTING ASPHALT PAVEMENT AND CONSTRUCTION OF APPROXIMATELY 41,400 SF OF NEW CONCRETE PAVEMENT AT LOCATION IMMEDIATELY EAST OF THE EXISTING BUILDING. SEE SHEET C-105 FOR PAVEMENT DETAILS



NOTE: ALL OTHER CIVIL WORK BID SEPARATELY; SEE PERMIT B13900566.

PAVEMENT SCOPE CLARIFICATION EXHIBIT



Reynolds, Smith and Hills, Inc.
 1000 LEGION PLACE, SUITE 800
 ORLANDO, FL 32801
 407-893-5800 FAX 407-648-2128
 www.rsandh.com
 FL Cert. Nos. AAC001886 - EB0005620 - LCC000210



ORANGE COUNTY UTILITIES
 OPERATIONS CENTER
 8100 PRESIDENTS DRIVE
 ORLANDO, FLORIDA

SEAL

MICHAEL A. COFFEY, P.E.
 FL. REGISTRATION NO. 57412

REVISIONS

NO.	DESCRIPTION	DATE
1	5' FENCE PER OC COMMENTS	5/02/13
2	SITE PACKAGE ADDENDUM 1	5/16/13
3	PEMB ADDENDUM 1	6/06/13
4	CONFORMED SET	3/14/14

DATE ISSUED: APRIL 12, 2013

REVIEWED BY: M. COFFEY, P.E.

DRAWN BY: D. STALEY

DESIGNED BY: M. COFFEY, P.E.

AEP PROJECT NUMBER
 107-0745-000

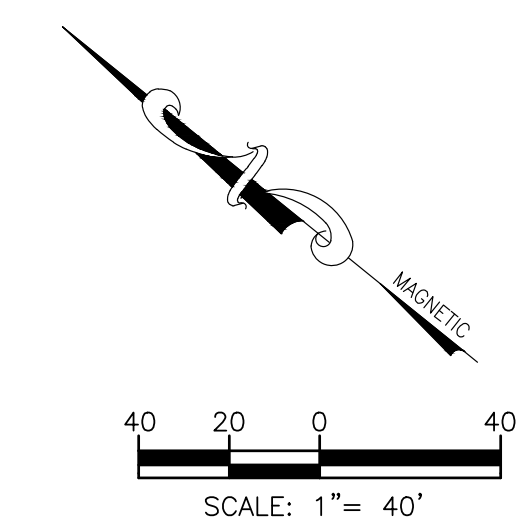
© 2003 REYNOLDS, SMITH AND HILLS, INC.

SHEET TITLE

SITE
 GRADING &
 DRAINAGE PLAN

SHEET NUMBER
C-201

CONFORMED SET



STRUCTURE	TYPE	RIM ELEV.	INV IN	INV OUT
S-0	MES	-	42" RCP INV IN = 83.92	
S-1	TYPE "E" INLET	93.20	36" RCP INV IN = 84.17	42" RCP INV OUT = 84.17
S-2	8' DIA TYPE "J" MANHOLE	94.96	24" RCP INV IN = 84.42 30" RCP INV IN = 88.50 24" RCP INV IN = 86.29	36" RCP INV OUT = 84.42
S-3	TYPE "E" INLET	94.00		24" RCP INV OUT = 84.70
S-4	TYPE "E" INLET	92.20		24" RCP INV OUT = 86.70
S-5	TYPE "E" CURB INLET	94.80	24" RCP INV IN = 88.70	30" RCP INV OUT = 88.70
S-6	TYPE "E" CURB INLET	94.80	18" RCP INV IN = 88.85	24" RCP INV OUT = 88.85
S-7	TYPE "E" INLET	94.20		18" RCP INV OUT = 88.95
S-8	5' DIA TYPE "J" MANHOLE	95.07	24" RCP INV IN = 86.61	24" RCP INV OUT = 86.61

- NOTES:**
- CONTRACTOR SHALL BE REQUIRED TO ATTEND A MANDATORY PRE-CONSTRUCTION MEETING WITH ORANGE STAFF PRIOR TO ANY DISTURBANCE OF THE PROPERTY.
 - CONTRACTOR SHALL HAVE EROSION CONTROL DEVICES IN PLACE PRIOR COMMENCEMENT OF CONSTRUCTION. IT IS THE CONTRACTOR'S RESPONSIBILITY TO ASSURE ALL EROSION CONTROL DEVICES ARE MAINTAINED IN PROPER OPERATING CONDITION THROUGHOUT THE CONSTRUCTION PERIOD.
 - CONTRACTOR SHALL COVER INLET GRATES WITH FILTER FABRIC UNTIL SUCH TIME AS STORMWATER SYSTEM IS PLACED INTO SERVICE.
 - REFER TO SHEETS C-301, C-302 AND C-303 FOR EROSION CONTROL DETAILS AND REQUIREMENTS.
 - CONTRACTOR SHALL BE RESPONSIBLE TO ENSURE THAT HANDICAP PARKING SPACES DO NOT EXCEED 2% SLOPE IN ANY DIRECTION AND SHALL BE IN COMPLIANCE WITH THE FLORIDA BUILDING CODE, LATEST EDITION FOR ADA REQUIREMENTS. CURB RAMPS SHALL NOT EXCEED 1:12 SLOPE IN THE DIRECTION OF TRAVEL WITH A MAXIMUM 2% CROSS SLOPE.

LEGEND

- TOP OF CURB / TOP OF PAVT: PROPOSED ELEVATION
- EXISTING SPOT ELEVATION: 28.00
- PROPOSED SPOT ELEVATION: 28.00
- EXISTING CONTOUR: 27.0
- PROPOSED CONTOUR: 27.0
- SF: SILT FENCE
- MAJOR-BASIN DRAINAGE LIMIT: X-X
- MAJOR-BASIN DRAINAGE TAG: X.XX AC. CN=X.XX
- MINOR-BASIN DRAINAGE LIMIT: X-X
- MINOR-BASIN DRAINAGE TAG: X.XX AC.
- INLET PROTECTION: [Symbol]

CONTRACTOR IS RESPONSIBLE FOR PAVEMENT REPLACEMENT AND REPAIR FOR FOUNDATION INSTALLATION AND ANY DAMAGE ASSOCIATED WITH THE CONSTRUCTION OF THE PEMB

AREA SHOWN IS THE PAVEMENT INCLUDED IN THIS PROJECT. CONSIST OF APPROXIMATELY 41,400 SF OF CONCRETE PAVEMENT. CONCRETE ASSOCIATED WITH NEW FUEL FACILITY AND TRUCK WASH IS ALSO INCLUDED IN THIS PROJECT SCOPE OF WORK. ALL OTHER PAVEMENT SHOWING IS WITHIN A SEPERATE CONTRACT AND SHALL NOT BE INCLUDED IN THIS SCOPE OF WORK.

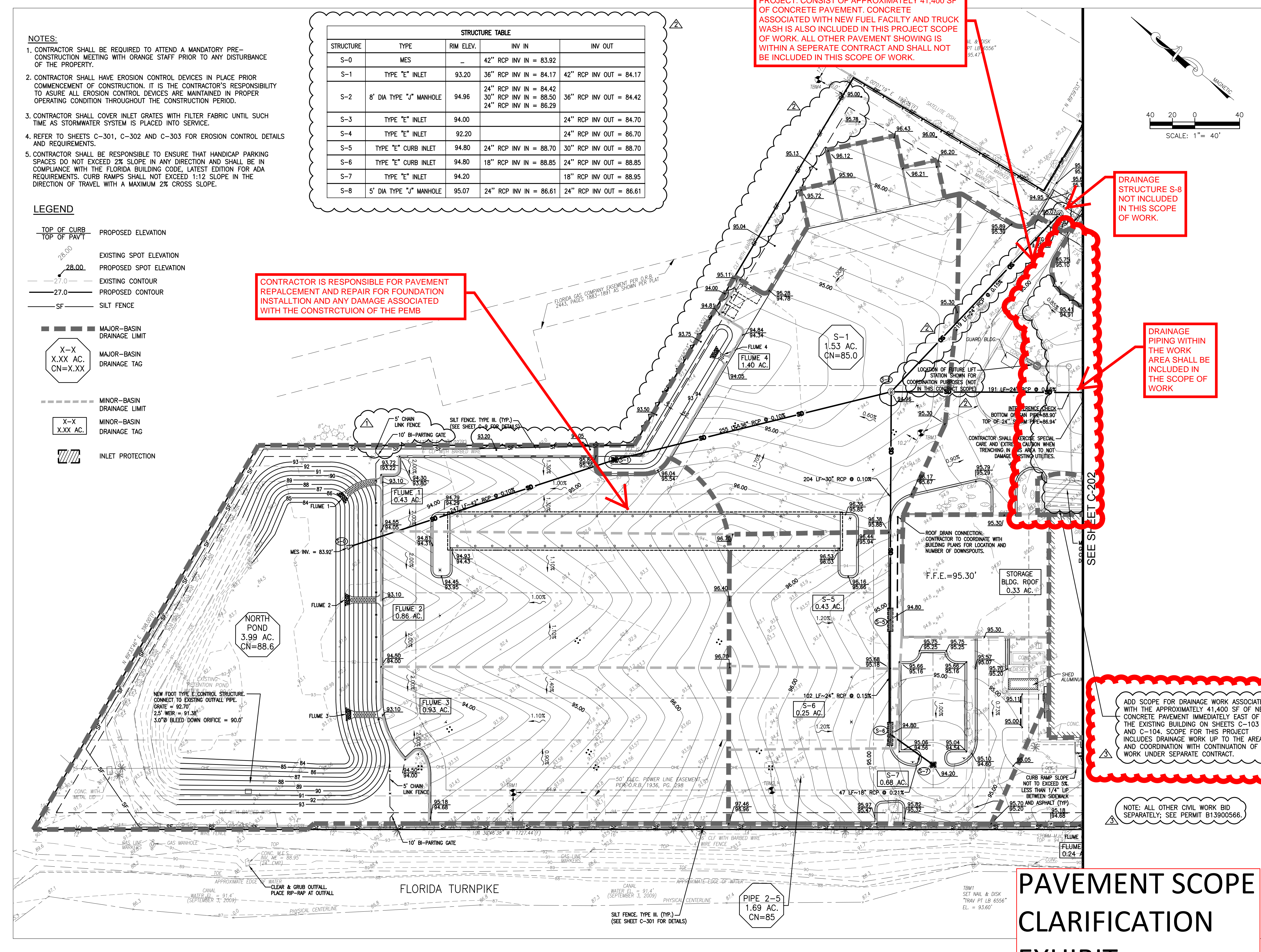
DRAINAGE STRUCTURE S-8 NOT INCLUDED IN THIS SCOPE OF WORK.

DRAINAGE PIPING WITHIN THE WORK AREA SHALL BE INCLUDED IN THE SCOPE OF WORK

ADD SCOPE FOR DRAINAGE WORK ASSOCIATED WITH THE APPROXIMATELY 41,400 SF OF NEW CONCRETE PAVEMENT IMMEDIATELY EAST OF THE EXISTING BUILDING ON SHEETS C-103 AND C-104. SCOPE FOR THIS PROJECT INCLUDES DRAINAGE WORK UP TO THE AREA AND COORDINATION WITH CONTINUATION OF WORK UNDER SEPERATE CONTRACT.

NOTE: ALL OTHER CIVIL WORK BID SEPARATELY; SEE PERMIT B13900566.

PAVEMENT SCOPE
 CLARIFICATION
 EXHIBIT





Reynolds, Smith and Hills, Inc.
 1000 LEGION PLACE, SUITE 800
 ORLANDO, FL 32801
 407-893-5800 FAX 407-648-2128
 www.rsandh.com
 FL.Cert.Nos. AAC001886 - EB0005620 - LCC000210



**ORANGE COUNTY UTILITIES
 OPERATIONS CENTER
 8100 PRESIDENTS DRIVE
 ORLANDO, FLORIDA**

SEAL

MICHAEL A. COFFEY, P.E.
 FL. REGISTRATION NO. 57412

REVISIONS

NO.	DESCRIPTION	DATE
1	△ SITE PACKAGE ADDENDUM 1	5/16/13
2	△ PEMB ADDENDUM 1	6/06/13
3	△ CONFORMED SET	3/14/14

DATE ISSUED: APRIL 12, 2013
 REVIEWED BY: M. COFFEY, P.E.
 DRAWN BY: D. STALEY
 DESIGNED BY: M. COFFEY, P.E.

AEP PROJECT NUMBER
 107-0745-000

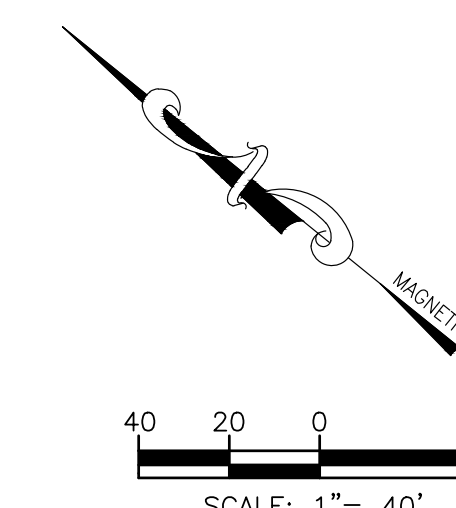
© 2003 REYNOLDS, SMITH AND HILLS INC.

SHEET TITLE

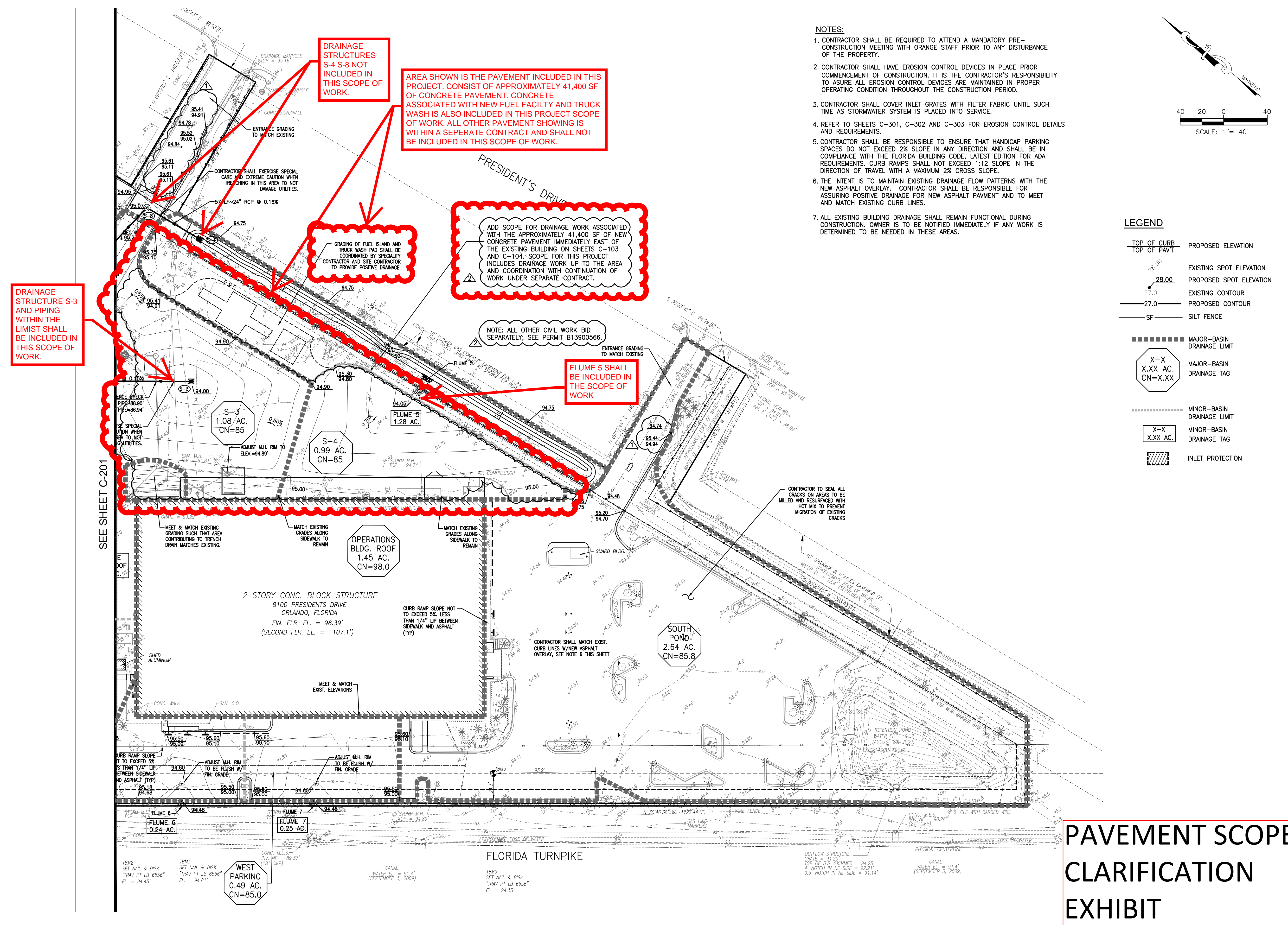
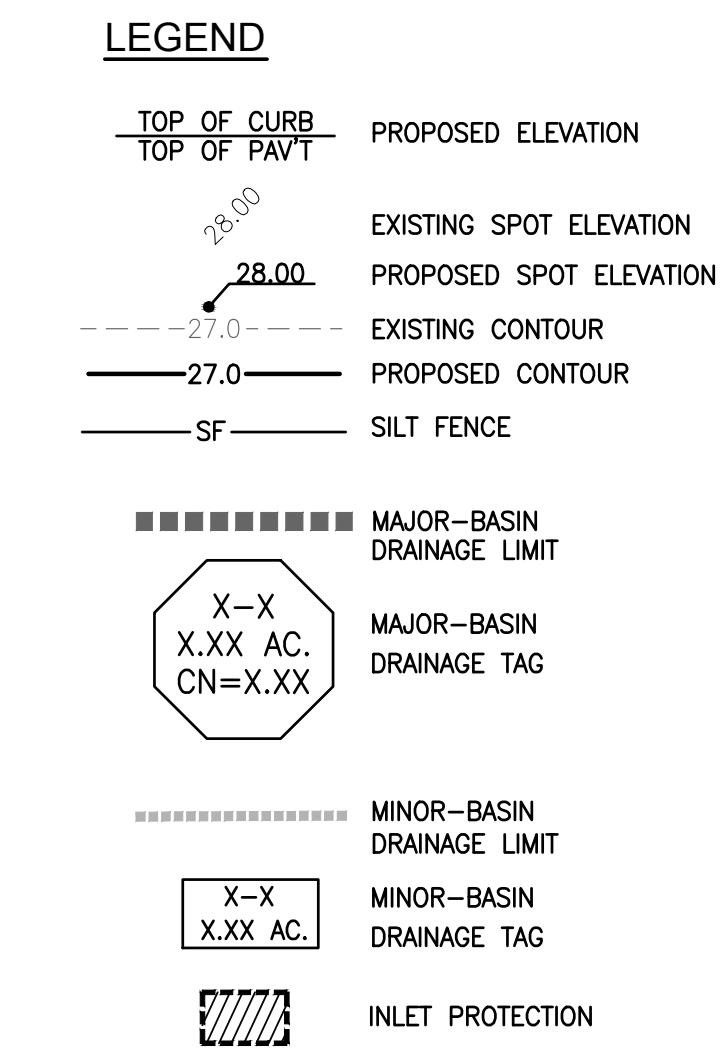
**SITE
 GRADING &
 DRAINAGE PLAN**

SHEET NUMBER
C-202

CONFORMED SET



- NOTES:**
- CONTRACTOR SHALL BE REQUIRED TO ATTEND A MANDATORY PRE-CONSTRUCTION MEETING WITH ORANGE STAFF PRIOR TO ANY DISTURBANCE OF THE PROPERTY.
 - CONTRACTOR SHALL HAVE EROSION CONTROL DEVICES IN PLACE PRIOR COMMENCEMENT OF CONSTRUCTION. IT IS THE CONTRACTOR'S RESPONSIBILITY TO ASSURE ALL EROSION CONTROL DEVICES ARE MAINTAINED IN PROPER OPERATING CONDITION THROUGHOUT THE CONSTRUCTION PERIOD.
 - CONTRACTOR SHALL COVER INLET GRATES WITH FILTER FABRIC UNTIL SUCH TIME AS STORMWATER SYSTEM IS PLACED INTO SERVICE.
 - REFER TO SHEETS C-301, C-302 AND C-303 FOR EROSION CONTROL DETAILS AND REQUIREMENTS.
 - CONTRACTOR SHALL BE RESPONSIBLE TO ENSURE THAT HANDICAP PARKING SPACES DO NOT EXCEED 2% SLOPE IN ANY DIRECTION AND SHALL BE IN COMPLIANCE WITH THE FLORIDA BUILDING CODE, LATEST EDITION FOR ADA REQUIREMENTS. CURB RAMPS SHALL NOT EXCEED 1:12 SLOPE IN THE DIRECTION OF TRAVEL WITH A MAXIMUM 2% CROSS SLOPE.
 - THE INTENT IS TO MAINTAIN EXISTING DRAINAGE FLOW PATTERNS WITH THE NEW ASPHALT OVERLAY. CONTRACTOR SHALL BE RESPONSIBLE FOR ASSURING POSITIVE DRAINAGE FOR NEW ASPHALT PAYMENT AND TO MEET AND MATCH EXISTING CURB LINES.
 - ALL EXISTING BUILDING DRAINAGE SHALL REMAIN FUNCTIONAL DURING CONSTRUCTION. OWNER IS TO BE NOTIFIED IMMEDIATELY IF ANY WORK IS DETERMINED TO BE NEEDED IN THESE AREAS.



DRAINAGE STRUCTURES S-4 S-8 NOT INCLUDED IN THIS SCOPE OF WORK.

AREA SHOWN IS THE PAVEMENT INCLUDED IN THIS PROJECT. CONSIST OF APPROXIMATELY 41,400 SF OF CONCRETE PAVEMENT. CONCRETE ASSOCIATED WITH NEW FUEL FACILITY AND TRUCK WASH IS ALSO INCLUDED IN THIS PROJECT SCOPE OF WORK. ALL OTHER PAVEMENT SHOWING IS WITHIN A SEPERATE CONTRACT AND SHALL NOT BE INCLUDED IN THIS SCOPE OF WORK.

ADD SCOPE FOR DRAINAGE WORK ASSOCIATED WITH THE APPROXIMATELY 41,400 SF OF NEW CONCRETE PAVEMENT IMMEDIATELY EAST OF THE EXISTING BUILDING ON SHEETS C-103 AND C-104. SCOPE FOR THIS PROJECT INCLUDES DRAINAGE WORK UP TO THE AREA AND COORDINATION WITH CONTINUATION OF WORK UNDER SEPERATE CONTRACT.

DRAINAGE STRUCTURE S-3 AND PIPING WITHIN THE LIMITS SHALL BE INCLUDED IN THIS SCOPE OF WORK.

FLUME 5 SHALL BE INCLUDED IN THE SCOPE OF WORK

**PAVEMENT SCOPE
 CLARIFICATION
 EXHIBIT**

SEE SHEET C-201

OPERATIONS BLDG. ROOF
 1.45 AC.
 CN=98.0

SOUTH POND
 2.64 AC.
 CN=85.8

WEST PARKING
 0.49 AC.
 CN=85.0

FLORIDA TURNPIKE